



Fabrics indoor collection

**chairs&
more**

Giovane azienda nata nel 2007 con l'obiettivo di rispondere alle moderne esigenze del mercato contract, Chairs & More da subito si propone al mercato internazionale con le sue collezioni dal design estremamente lineare come la poltroncina So Pretty e le sedute Gotham. L'attenzione per il comfort, la qualità dei materiali e la produzione accurata consentono all'azienda di crescere rapidamente proponendo ogni anno nuove collezioni e ottenendo riscontri da parte del mercato e della stampa internazionale che ne riconoscono la forte personalità e l'impegno costante nella ricerca di nuovi concept di prodotto.

Nel 2014 Chairs & More si apre a collaborazioni con giovani designer, nascono così la collezione Churros disegnata da Kazuko Okamoto che interpreta il concetto di modularità di seduta in modo radicale, e, per la prima volta, la collezione Jujube dedicata all'outdoor disegnata da Antonio De Marco e Simone Fanciullacci. Da allora, l'azienda, è continuamente impegnata a sviluppare nuovi prodotti selezionando giovani e talentuosi designer tra cui Tommaso Caldera, con il quale vince il secondo premio Young Design 2017 con la poltroncina Mousse al Salone del Mobile di Milano, e lo studio Pastina con la nuova collezione Chips. Dalla collaborazione con Roberto Paoli nascono invece le collezioni Babah e Nube, quest'ultima realizzata con un innovativo poliuretano morbido FreeForm.

Nel 2020 Chairs & More amplia ulteriormente la propria gamma di sedute per esterno proponendo ben 3 collezioni che interpretano in modo differente il tema dell'intreccio: Altana, disegnata da Antonio De Marco, Millie dello Studio Pastina e Klot nata dalla nuova collaborazione con i giovanissimi designer di AM Studio.

“Ci rivolgiamo a chi sceglie il design ma non perde di vista la comodità, a chi è attratto dall'originalità ma non vuole l'eccesso, a chi ricerca la qualità e apprezza la disponibilità a collaborare riconoscendo che il servizio è una componente fondamentale di ciò che viene offerto”.

Marco Roseano

Young company founded in 2007 to respond to the modern needs of the contract market, Chairs & More immediately presents itself to the international market with its linear design collections such as the So Pretty armchair and Gotham chair. The attention to comfort, the quality of the materials and the careful production allow the company to grow rapidly by offering new collections every year and obtaining feedback from the market and the international press that recognizes their strong personality and constant commitment to search for new product concepts.

In 2014, Chairs & More starts the collaboration with young designers; Kazuko Okamoto designs the Churros collection, which interprets the concept of modular seating, Antonio De Marco and Simone Fanciullacci design the Jujube for outdoor use. Since then, the company has been continuously committed to developing new products by selecting young and talented designers like Tommaso Caldera, winning the second award at the Young Design 2017 with the Mousse armchair presented at the Salone del Mobile in Milan, and the Pastina Design Studio with the Chips collection. Roberto Paoli designs the Babah collection, in rigid polyurethane, and the Nube collection, with the seat in innovative FreeForm soft polyurethane.

In 2020 Chairs & More expands its range of outdoor seating by offering 3 collections that interpret the theme of weaving in a different way: Altana, designed by Antonio De Marco, Millie from Studio Pastina and Klot created by the new collaboration with young designers by AM Studio.

"We turn to those who choose design but do not lose sight of comfort, to those who are attracted by originality but do not want excess, to those who seek quality and appreciate the willingness to collaborate, recognizing that service is a fundamental component of what is offered".

Marco Roseano

Secret

Cat. A



FEATURES
76% PVC 22% PES 2% PU

LIGHTFASTNESS
6/7 ISO 105 B02

FASTNESS TO RUBBING
DRY 5, WET 5, ISO 1050X12

ABRASION RESISTANCE
60.000 CYCLES ISO 5470-2

FIRE RESISTANCE
UNI 9175 classe 1IM
BS 5852-1 cigarette test
BS 5852-1 match test

Caliente

Cat. A



FEATURES
52% POLIPRO, 48% PL

LIGHTFASTNESS
4/5 ISO 105 B02

FASTNESS TO RUBBING
DRY 4/5, WET 4, ISO 1050X12

ABRASION RESISTANCE
40.000 CYCLES UNI EN ISO 12947-2

FIRE RESISTANCE
1IM - UNI 9175
EN 1021 part 1/2
NFPA 260 Class 1
California TB 117:2013
IMO MED - Ftp 307 part 8
IMO MED - Ftp 307 part 7

Angel

Cat. A



FEATURES
100% POLIPRO

LIGHTFASTNESS
5/6 ISO 105 B02

FASTNESS TO RUBBING
DRY 5, WET 4/5, ISO 1050X12

ABRASION RESISTANCE
100.000 CYCLES
UNI EN ISO 12947-2

FIRE RESISTANCE
1IM - UNI 9175
EN 1021 part 1/2
BS 5852 crib 5

NFPA 260 Class 1
California TB 117:2013
IMO MED - Ftp 307 part 8

Angel combo

Cat. A



FEATURES
100% POLIPRO

LIGHTFASTNESS
5 ISO 105 B02

FASTNESS TO RUBBING
DRY 5, WET 4/5, ISO 1050X12

ABRASION RESISTANCE
50.000 CYCLES UNI EN ISO 12947-2

FIRE RESISTANCE
1IM - UNI 9175
EN 1021 part 1/2
BS 5852 crib 5
NFD 60-013:06 - AM 18
NFPA 260 Class 1
California TB 117:2013
IMO MED - Ftp 307 part 8

Magnum tex

Cat. B



FEATURES
88% PVC 7% PL 4% CO 1% PO

LIGHTFASTNESS
> 7 ISO 105 B02

FASTNESS TO RUBBING
DRY 5, WET 5, ISO 1050X12

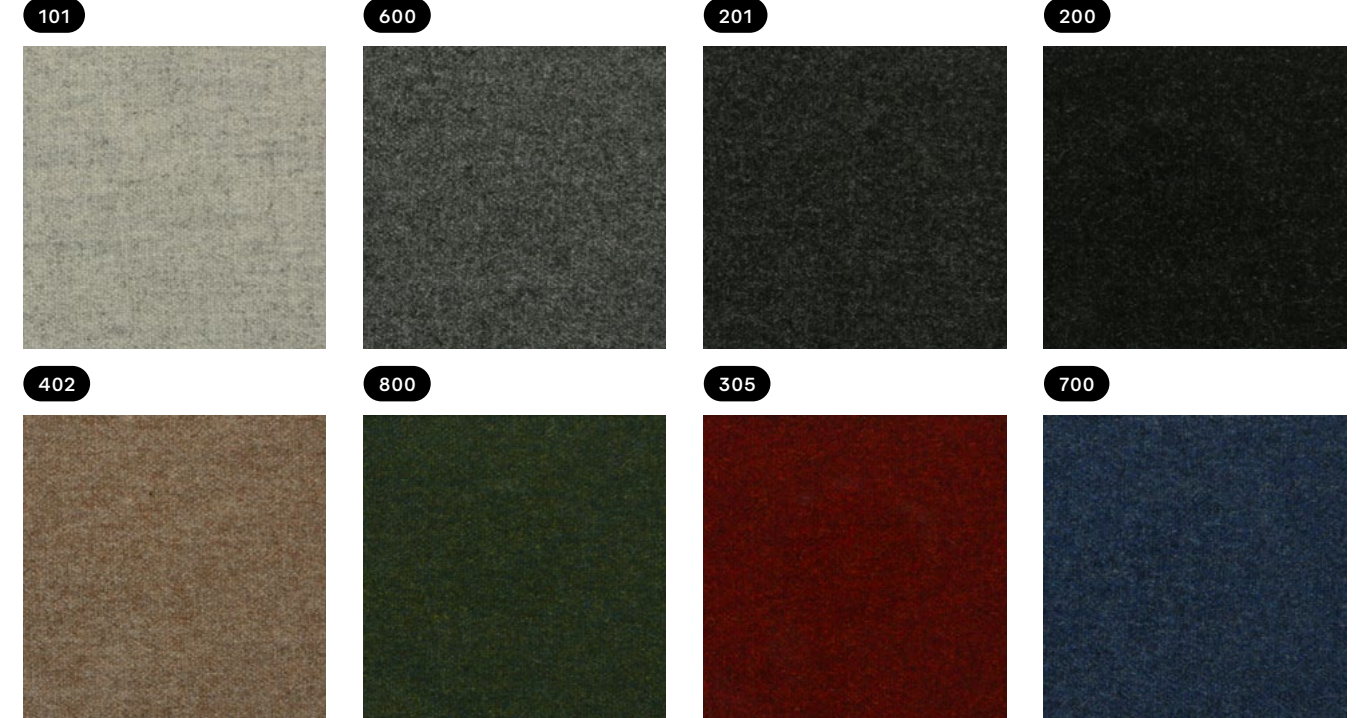
ABRASION RESISTANCE
>100,000 CYCLES
UNI EN ISO 12947-2

FIRE RESISTANCE
1IM - UNI 9175
EN 1021 1/2
BS 5852 part 1, is 0 and 1
NF P 92 503 M3
NFPA 260 Class 1
California TB 117-2013

IMO FTP Code 307 part 8
ÖNOM B 3825 - schwer brennbar

Opera

Cat. C



FEATURES
100% WO

LIGHTFASTNESS
5 ISO 105 B02

FASTNESS TO RUBBING
DRY 4/5, WET 4, ISO 1050X12

ABRASION RESISTANCE
50,000 CYCLES UNI EN ISO 12947-2

FIRE RESISTANCE
1IM - UNI 9175
EN 1021 part 1/2
BS 5852 part 1, is 0
BS 5852 crib 5
NF D 60 013 - AM. 18

California TB 117-2013
IMO FTP Code 307 part 8

Tailor

Cat. B



FEATURES
100% PES

LIGHTFASTNESS
6 ISO 105 B02

FASTNESS TO RUBBING
DRY 4/5, WET 4/5, ISO 1050X12

ABRASION RESISTANCE
100,000 CYCLES UNI EN ISO 12947-2

FIRE RESISTANCE
UNI 9175 classe 1IM

Aida

Cat. C



FEATURES
100% PL

LIGHTFASTNESS
5 ISO 105 B02

FASTNESS TO RUBBING
DRY 4/5, WET 4, ISO 1050X12

ABRASION RESISTANCE
150,000 CYCLES UNI EN ISO 12947-2

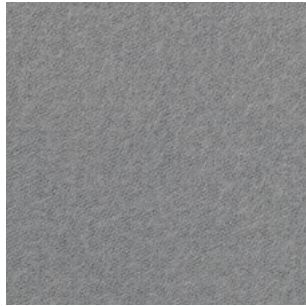
FIRE RESISTANCE
1IM - UNI 9175
classe 1 - UNI 9177
class 1 - EN 13773
EN 1021 part 1/2
BS 7176 + A1 medium hazard
BS 5852 crib 5

NF-P 92 503 - M1
DIN 4102 - B1
NFPA 260
NFPA 701 pass
California TB 117:2013
IMO MED - Ftp 307 part 8
ÖNOM B 3825 - schwer brennbar

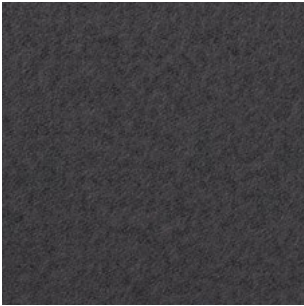
Lani

Cat. D

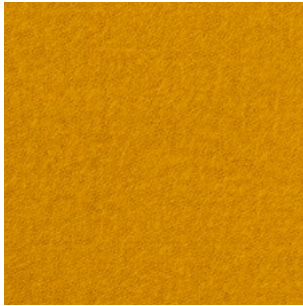
7060.32



7060.31



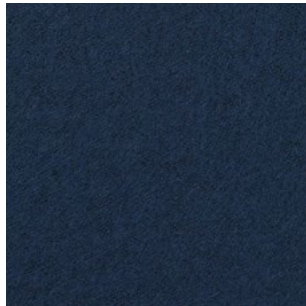
7060.29



7060.35



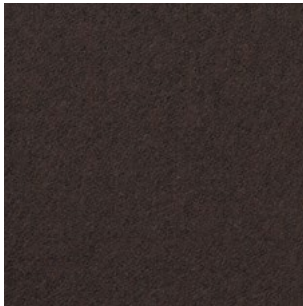
7060.42



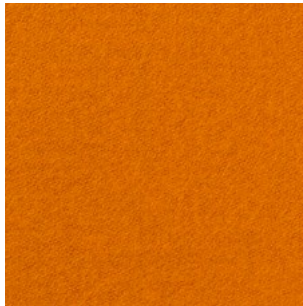
7060.14



7060.20



7060.25



FEATURES
80% WO 20% POLYAMIDE

LIGHTFASTNESS
5-7 ISO 105 B02

FASTNESS TO RUBBING
DRY 4/5, WET 4/-5, ISO 105X12

ABRASION RESISTANCE
300.000 CYCLES UNI EN ISO 12947-2

FIRE RESISTANCE
EN 1021 - 1&2 (cigarette & match)
BS 5852 Ignition Source 5 when FR treated
UNI 9175 Classe 1 IM

California TB 117-2013
IMO FTP Code 307 part 8
NFD 60 013 - AM. 18
DIN 4102, B2 when FR treated
NFPA 260:2013, CLASS 1

Graphic design & layout
Marco Sorrentino
MSstudio.it

© Chairs and More s.r.l.
all rights reserved

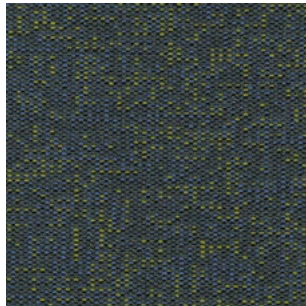
Chairs & More si riserva di apportare, senza preavviso, modifiche nei materiali, nei rivestimenti, nelle finiture e nei disegni dei prodotti presentati in questo catalogo. Le textures ed i colori dei materiali e delle finiture hanno valore indicativo in quanto soggetti alle tolleranze dei processi di stampa.

Chairs & More reserves the right to change, without previous notice, materials, covers, finishes and drawings of the products presented in this catalogue. The textures and colours of materials and finishes are indicative as they are depending on the tolerances of the printing process.

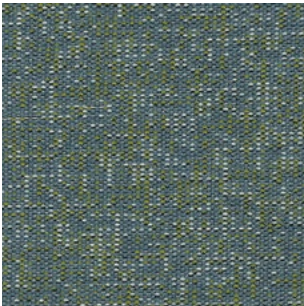
Galaxy

Cat. D

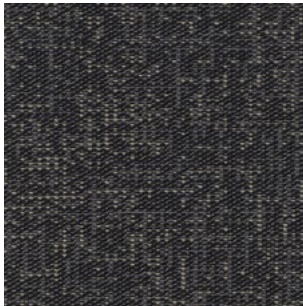
42



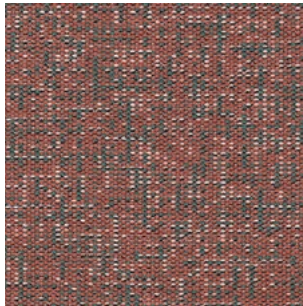
49



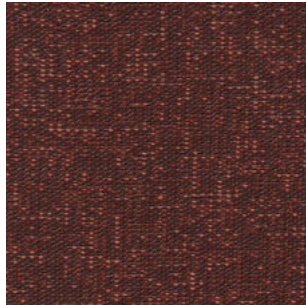
55



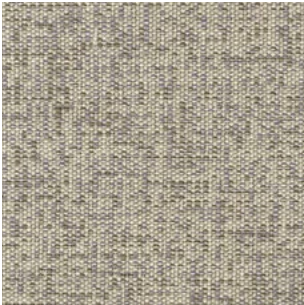
60



22



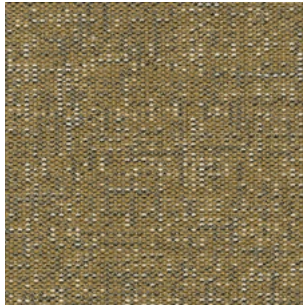
05



11



20



FEATURES
58% WO 19% PP 17% PES 6% CO

LIGHTFASTNESS
5/6 ISO 105 B02

FASTNESS TO RUBBING
DRY 4/5, WET 4, ISO 1050X12

ABRASION RESISTANCE
35.000 CYCLES UNI EN ISO 12947-2

FIRE RESISTANCE
BS5852 0/1
EN 1021 1/2
BS7176 Low hazard
California TB 117-2013
NFPA 260:2013, CLASS 1
UNI 9175 Clase 3IM

Chairs & More s.r.l.
Via dell'Artigianato, 18
San Giovanni al Natisone,
33048 Udine — Italy
+39 0432 743271

info@chairsandmore.it
chairsandmore.it

**chairs&
more**